

# Roof Drainage Contractor's Guide

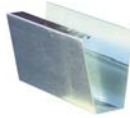


*Metal Products For The Construction Industry*

[www.awardmetals.com](http://www.awardmetals.com)

## Fascia Gutter - Plain Face

5¼" and 7¼"  
Galvanized or Bonderized



## Fascia Gutter - Deco Face

5¼" 5 Rib & 7¼" 7 Rib  
Galvanized or Bonderized  
With or Without Wing Various Lengths



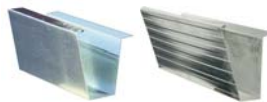
## Fascia Gutter - Curved Face

5¼" and 7¼"  
Galvanized or Bonderized  
With or Without Wing  
Various Lengths



## Tile Gutter - Plain or Deco Face

7¼"  
Galvanized or Bonderized  
With or Without Wing



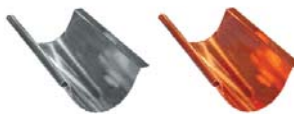
## Half Round - Single Bead No Wing

4", 5", 6" in 10'  
5", 6" in 20'  
Galvanized, Bonderized  
or Copper



## Half Round - Single Bead With Wing

4", 5", 6" in 10'  
5", 6" in 20'  
Galvanized, Bonderized  
or Copper



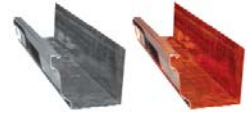
## Half Round - Double Bead

4", 5", 6" in 10'  
5", 6" in 20'  
Galvanized, Bonderized  
or Copper



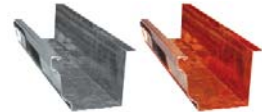
## "K" Style - No Wing

4", 5", 6" Galvanized  
5", 6" Copper



## "K" Style - With 1" Wing

4", 5", 6" Galvanized  
5", 6" Copper



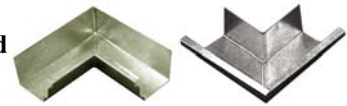
## Half Round Miter

4", 5", 6"  
All Sizes Available  
Galvanized or Copper



## "K" Style Miter

4", 5", 6" Galvanized  
5", 6" Copper



## Leader Head - Plain & Ornate

1¾" x 2¾"  
2" x 3"  
3" x 4"



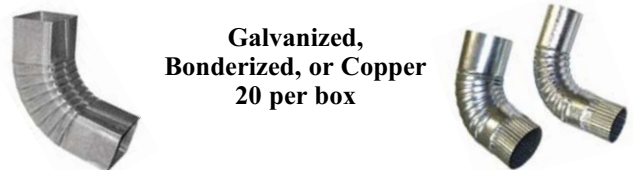
## Scupper

2" x 3", 3" x 4", 4" x 6"  
10" Tube - Left, Center, Right



## Elbow - Rectangular or Round

Galvanized,  
Bonderized, or Copper  
20 per box



### Square Downspout - 10' & 20' Lengths

1 3/4" x 2 3/4"  
\*2" x 3" \*3" x 4" \*4" x 6"  
26 or 28 gauge  
Bonderized, Galvanized  
or Pre-painted  
\*16 oz. Copper in 10' Lengths Only



### Round Downspout - 10' Lengths

2" through 6"  
26 gauge Galvanized - 16 oz.  
Copper Special Order



### Pipe Straps



1 3/4" x 2 3/4"  
\*2" x 3", 3" x 4", 4" x 6"



2" Thru 4"  
Galvanized or Copper

### Slip Connectors



Galvanized  
50 per Box



Galvanized or Copper  
50 per Box

### Drop Outlets



Round



Rectangular



Tapered



Oval

### End Cap - Fascia Tap On Type



Fascia Tile



Curved Fascia



Pre-painted

### End Cap - "K" Tap On Type

4", 5", 6"  
All Sizes Available  
Galvanized or Copper



### End Cap - Half Round Tap On Type

4", 5", 6"  
All Sizes Available  
Galvanized or Copper



### Fascia Hangers

4" or 4 1/2"  
Galvanized or Copper



### Tile Hanger

5"  
Galvanized



### "K" Style Hanger

5" or 6"  
Galvanized or Copper



### Hook Hanger & Hidden Hanger



4"  
Galvanized



4", 4 1/2", 5", 6"  
Galvanized

### Half Round Crossbar

4", 5", 6"  
Galvanized or Copper  
Single Bead



### #10 Circle & Shank Hanger

4", 5", 6"  
Galvanized or Copper  
Fascia Board Mount



### Imperial Hanger - Single or Double Bead

4", 5", 6"  
Galvanized or Copper  
With Rods & Nuts



### Half Round Strap Hanger

5" or 6"  
All Sizes Available  
Galvanized or Copper

