

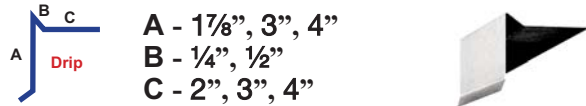
Roofing Metals

Contractor's Guide

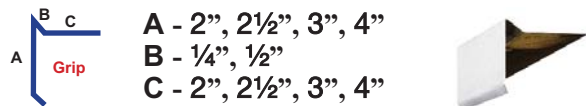


Metal Products For The Construction Industry
www.awardmetals.com

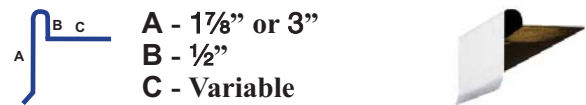
Gravel Stop With Drip 4", 6", 7 1/4", 8"



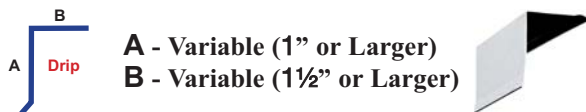
Gravel Stop With Grip 4", 6", 7 1/4", 8"



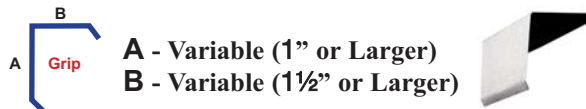
Fabry Crown Gravel Stop



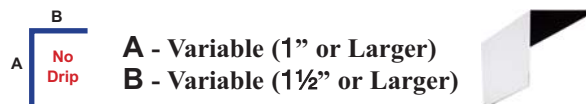
Eave Strip With Drip



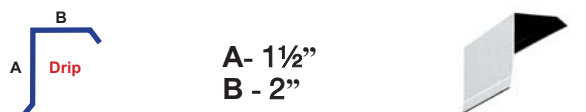
Nosing With Grip or Double Grip



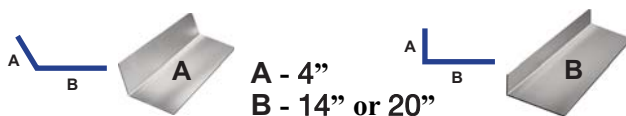
2 - Way Edge No Drip



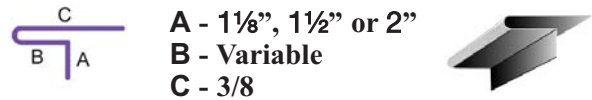
Fascia Cap



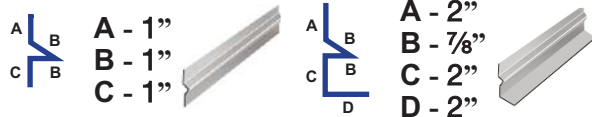
Saddle Stock - Style A or B



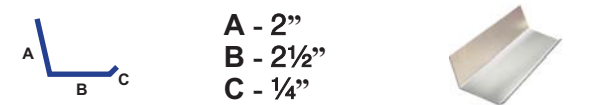
Lap Joint - Drip or Grip



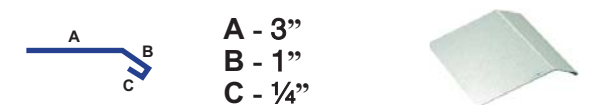
Diatto - Regular or Leg Type



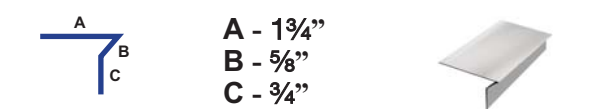
Vertical Flashing



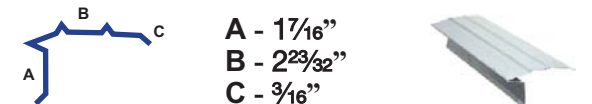
Eave Starter #230



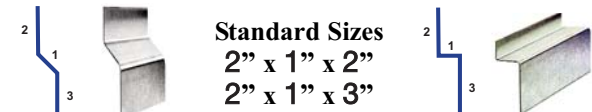
T-Metal



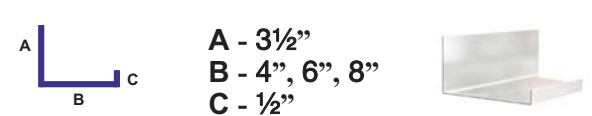
D-Metal



Z-Bar



Tile Pan U-Channel 90 Degree



Ribbed Tile Pan



A - 4"
B - 6" or 7"
C - 3/4" or 1"



Roof-To-Wall Head Flashing



A - 2", 3", 4"
B - 4" or 6"
Variable Pitch



Tile Riser



A - 7/8" or 1 1/2"
B - Variable
4:12 Pitch



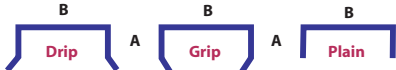
Eave Riser Strip T-Style



A - 1 1/2" or 3"
B - 2"
C - 1 1/2"
Weep & Nail Holes



Coping - Grip, Drip or Plain



A - 2" B - 6", 8" or 10"



Termite Flashing



A - 4" or 6"
B - 6", 7", or 8"
C - 1"



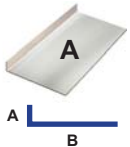
Brick Flashing



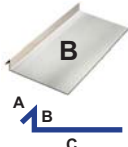
A - 1 1/2" @ 100°
B - 2 3/4"
C - 1/4"



Counter Flashing A or B



A - 1/2" B - 1/2"
B - 4 1/2", C - 5 1/2"
C - 6"



Tucker Flashing



A - 1/2"
B - 1/2"
C - 1/2"
D - 3 1/2"



"W" Valley - With or Without Closed Hem

18" or 24" Width
1" Rise



Aluminum Zinc Coated Steel or Galvanized

1 Rib Tile Valley - 3/4" Open Hem

26" Width
1" Rise



Aluminum Zinc Coated Steel or Galvanized

2-Rib Open Valley - With or Without Closed Hem

26" Width
1" Rise



4" Between Rise

Aluminum Zinc Coated Steel or Galvanized

3-Rib Valley - With or Without Closed Hem

24" Width
Aluminum Zinc Coated Steel
or Galvanized



4-Rib Valley - With or Without Closed Hem

24" Width
Aluminum Zinc Coated Steel
or Galvanized



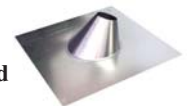
5-Rib Cedar Lite - With or Without Closed Hem

24" Width
Aluminum Zinc Coated Steel
or Galvanized



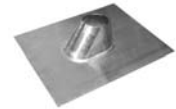
Standard Pipe Flashing - Flat to 5:12

1/2" to 4"
Galvanized or
Zinc-Aluminum Coated Steel Standard
or Aluminum Base



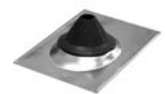
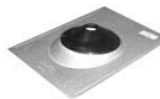
FHA Base Pipe Flashing - Flat to 5:12

1/2" to 7"
Galvanized or
Zinc-Aluminum Coated Steel
FHA Approved "Wide Base"



Multiflex - Flat to 5:12

1/2" to 2"
Galvanized or
Zinc-Aluminum Coated Steel
Low or High Neoprene Boot



Roof Outlet

2" Round With 5" Long Tube
2" Round With 10" Long Tube
Galvanized



Metal Products For The Construction Industry

www.awardmetals.com