

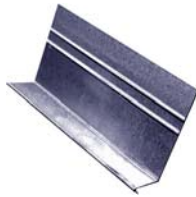
# Stucco Metals

## Contractor's Guide



### #34L Stucco Stop

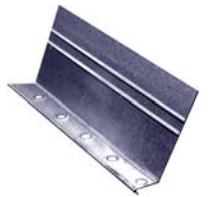
Award #34L Stucco Stop is generally used for exterior 3 coat stucco wall applications. Manufactured with a full 3-1/2" wall flange to meet current codes. The wall flange also has 2 stiffeners that can be used to align stucco stop for 13/16" or 5/16" coverage at the mud sill. Available in 7/8" ground only.



10' Lengths - Packaged 100' Per Bundle

### #36L Stucco Stop

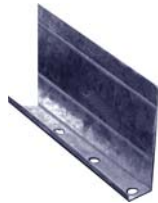
Award #36L Stucco Stop is generally used for exterior 3 coat stucco wall applications. Manufactured with a full 3-1/2" wall flange to meet current codes. The wall flange also has 2 stiffeners that can be used to align stucco stop for 13/16" or 5/16" coverage at the mud sill. Available with or without weep holes.



10' Lengths - Packaged 100' Per Bundle

### J-8 Drip Mold Metal

Award J-8 Drip Mold Metal is generally used as plaster or stucco stop at the mud sill. Manufactured with 3-1/2" wall flange to meet current codes. The 7/8" base is available with or without weep holes.



10' Lengths - Packaged 100' Per Bundle

### J-33 One Coat Screed

Award J-33 One Coat Screed is generally used with foam board for one coat stucco applications. Manufactured with a full 3-1/2" wall flange to meet current codes. The 1 3/8" base is available with or without weep holes.



10' Lengths - Packaged 100' Per Bundle

### #7 Sill Screed

Award #7 Sill Screed is generally used for exterior 3 coat stucco wall applications. Manufactured in 4", 5" and 5-1/2" dimensions. Available with or without weep holes.



10' Lengths - Packaged 100' Per Bundle

### #66 Casing Bead

Award #66 Casing Bead is for the use on window and door frames, available with weep holes.



3/4" or 7/8"

10' Lengths - Packaged 300' Per Carton