

Ventilation Contractor's Guide



Metal Products For The Construction Industry

www.awardmetals.com

STEALTH® Attic Vent - ICC ER-5463

24", 30", 36", 48"
Aluminum-Zinc Coated Steel
Composition, Flat & "S" Tile



STEALTH® Ridge Vent - ICC ER-6171



Ridge Cap



Sub-flashing

Nifty-fifty

Base: 15" x 18" Hood: 12" x 12"
Hi-impact plastic in 7 colors
50 sq. in. of Net Free Air



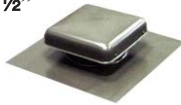
T-Top

4" & 7" Round 6" x 6" Square
Galvanized or Aluminum-Zinc
Coated Steel Regular or Shake Base



True-38

Base: 16½" x 16½" Hood: 10½" x 10½"
Galvanized, Painted or
Aluminum-Zinc Coated Steel
38 sq. in. of Net Free Air



T-Top Dead Soft Aluminum

4" & 7" Round
Aluminum With
Dead Soft Flashing



Pentagon Dormer

13" x 19"
"S" Tile or Flat Tile/Comp.
68 sq. in. Net Free Air



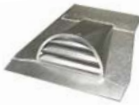
Aluminum Code Caps - Round

3" to 10" Round Regular Base
ICBO RPT. 3728
CLIS AA-513



Half Round Dormer - Square Back

9" x 18" or 12" x 24"
Aluminum-Zinc Coated Steel
Regular or Aluminum Base



Aluminum Code Caps - Oval

4" Horizontal or Vertical
ICBO RPT. 3728
CLIS AA-513



Half Round Dormer - Pointed Back

9" x 18" or 12" x 24"
Aluminum-Zinc Coated Steel
Regular or Aluminum Base



Roof Jack

4", 6", 8"
Regular Base
Galvanized



Eyebrow Dormer

4" x 19"
Regular Base
Aluminum-Zinc Coated Steel



2 Piece Roof Jack

3"- 4" 5"- 6" 7"- 8"
Regular or Shake Base



Horizontal Comb Vent

4" x 14"
Regular Base
Galvanized



Vertical Comb Vent

4" x 14"
Regular Base
Galvanized



Snow Splitter

1" - 2"
3" - 4"
Galvanized



China Cap

4" to 24"
Galvanized



Rectangular Gable End Louver

9" x 14", 12" x 14", 18" x 14", 24" x 14"
Galvanized Flush or Plaster Ground
2" Flange Weep & Nail Holes



Round Gable End Louver

14" or Larger Galvanized
Flush or Plaster Ground



Stamped Louver or Mesh Vent



6" x 14" Bonderized

Foundation Vent with 1/4" Screen

6" x 14" Galvanized
Plaster Ground



Ready Vent® - 8" x 16"

Poured in Place Foundation Vent
With or Without 2 Doors
Gray or Black



Dryer Vent & Wall Cap

4" Dryer Vent
6" Long Tube
with 2" Flange



4" or 7"
Wall Cap
with screen



Rotary Ventilators

24", 36", 48"
Galvanized or
Aluminum-Zinc Coated Steel



Gravity Vent

12" x 12"
1/4" Screen
Aluminum-Zinc Coated Steel



Tub Access Door

14" x 14" Piano or Hinge Snap On
1/2" or 7/8"
Plaster Ground



Half Round Sub Base Flashing

9" x 18" Dormer 10" x 10" Opening
12" x 24" Dormer 14" x 14" Opening



NET FREE AIR FLOW

STEALTH® Ridge Vent

Per lineal foot 8 sq. in.

STEALTH® Attic Vents

24" wide 40 sq. in.

30" wide 53 sq. in.

36" wide 66 sq. in.

48" wide 90 sq. in.

True-38

10½"x 10½" 38 sq. in.

NIFTY-fifty

12" x 12" 50 sq. in.

Eyebrow Vent

4" x 19" 50 sq. in.

Pentagon Dormer

13" x 19" 68 sq. in.

Half Round Dormers

9" x 18" 28.47 sq. in.

12" x 24" 50.19 sq. in.

Ready-Vent®

8" x 16" 73 sq. in.



Metal Products For The Construction Industry
www.awardmetals.com